

Shower quoting guide

www.clearlyglassltd.co.uk



Information we need to give you a quote

SIZES

Approximate size (width x height) of the screen or enclosure

LAYOUT

An approximate idea of the layout you would like

FINISH

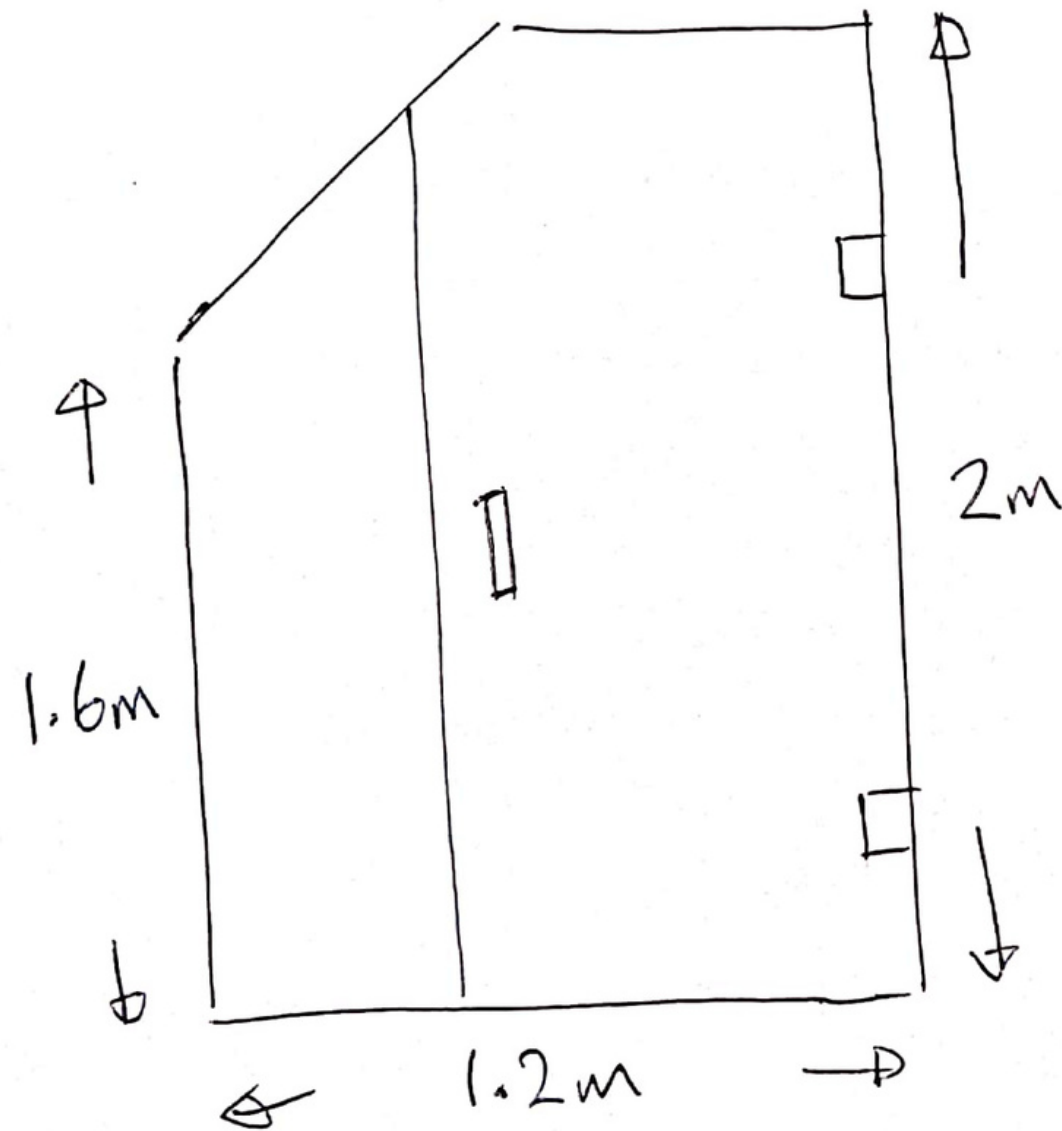
Hardware finish you would like a quote for

Example sketch on next page

www.clearlyglassltd.co.uk/glass-finishes/



- * DOOR HINGED TO WALL
- * DOOR OPENING OUT
- * CHROME FINISH.



DRAWINGS

A rough sketch (or a photo & description) and some sizes of each section is the best way for us to be able to give you a quote **(we will take accurate sizes during our survey if you choose to proceed)**.

PHOTOS

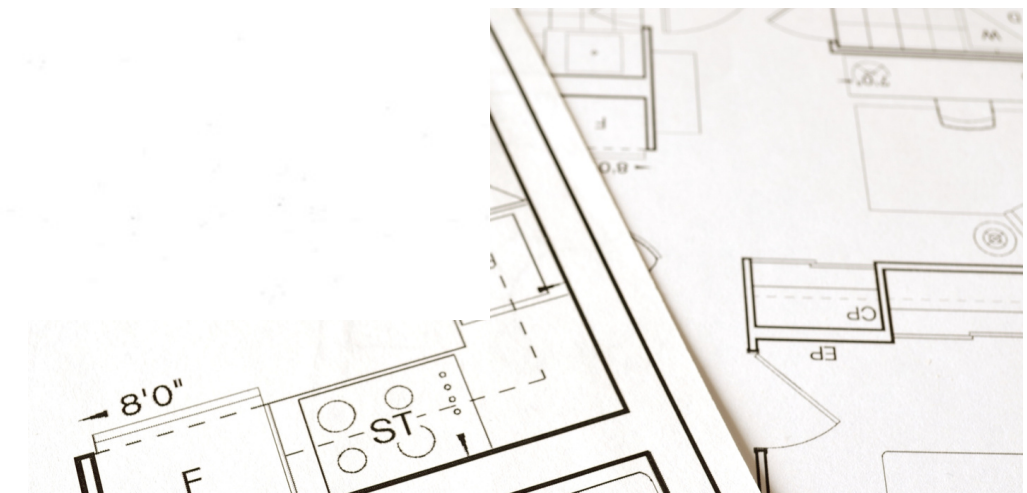
If possible please also provide photo's as this helps with quoting and understanding the sizes/sketch.

PLANS

If your bathroom has not been fitted but you have a design plan (and ideally a visual) please provide these instead of measurements and photos.

Email info to info@clearlyglassltd.co.uk

Or click on the link to **Whatsapp** us the info



Our process

01

You provide us with approximate sizes in order to give you an initial estimate

02

If you are happy with the estimate we will arrange a survey to take detailed measurements

03

Following our survey we will finalise your quote and take a 50% deposit if you are still happy to proceed

04

Your glass will be put into production and we will be in touch with a provisional installation date

05

Your shower will be installed and then your 50% balance invoice will be issued



Contact details

WEBSITE

www.clearlyglassltd.co.uk

PHONE

01395 488160

EMAIL ADDRESS

info@clearlyglassltd.co.uk

SHOWER QUOTING GUIDE

